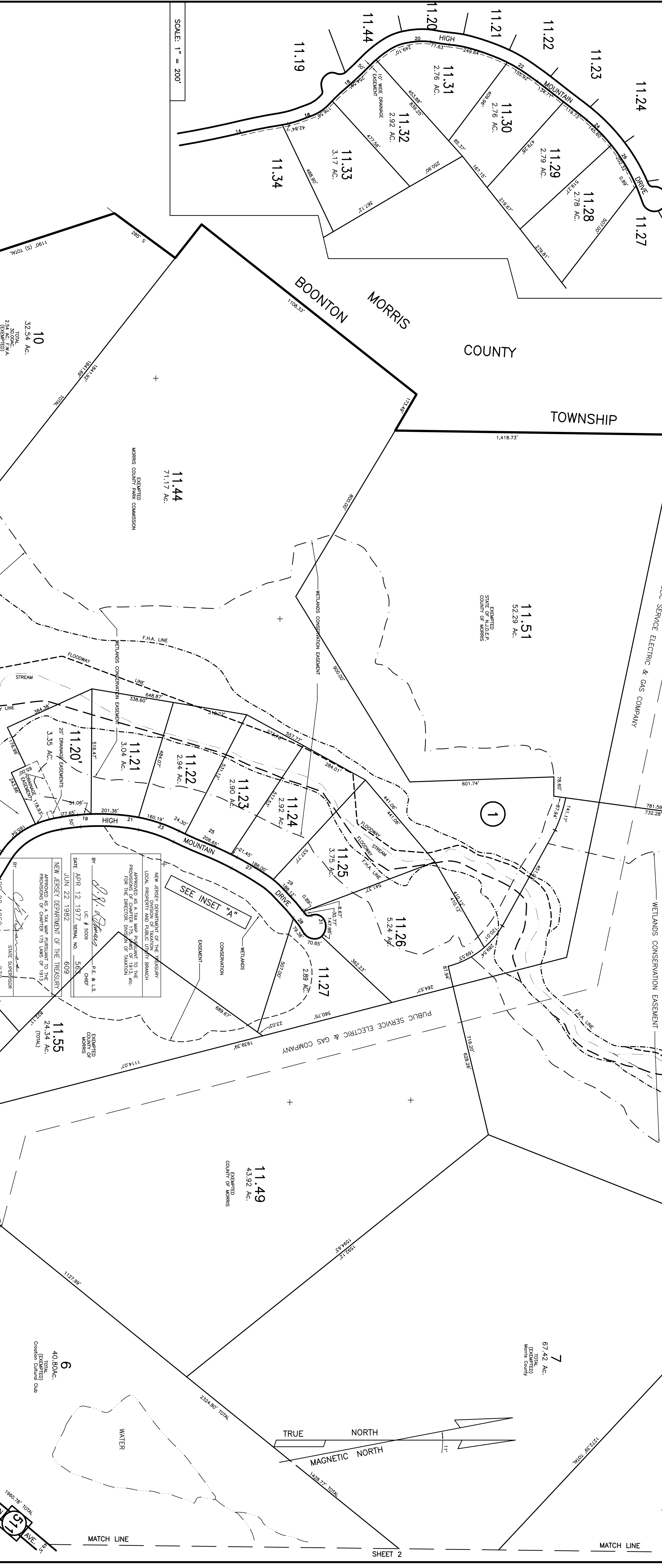
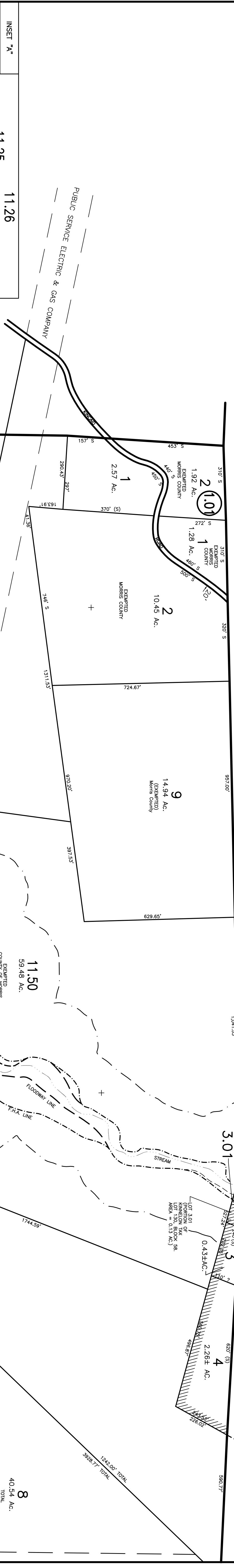


KINNELON BOROUGH

MORRIS COUNTY

BOONTON MORRIS COUNTY TOWNSHIP



THIS TAX MAP WAS DISTRICTED FROM A COAST OF THE PLATS CRAWLING DISTRICT MAP OF MORRIS COUNTY, NEW JERSEY, DISTRICTED IN 1959, AND SUBSEQUENTLY AMENDED AND ON FILE IN THE MONTVILLE TOWNSHIP ENGINEERING OFFICE.

MARK J. MANTYLA
PROFESSIONAL LAND SURVEYOR
NJ LICENSE #58231772

NEW JERSEY DEPARTMENT OF THE TREASURY
LOCAL PROPERTY AND PUBLIC UTILITIES BRANCH
APPROVED AS A TAX MAP PURSUANT TO THE PROVISIONS OF CHAPTER 175, LAWS OF 1913, ETC. FOR THE DIRECTOR OF TAXATION.

DATE APR 12 1977 SERIAL NO. 565
JUN 22 1982
NEW JERSEY DEPARTMENT OF THE TREASURY
APPROVED AS A TAX MAP PURSUANT TO THE PROVISIONS OF CHAPTER 175 LAWS OF 1913.

DATE APR 22 1959 FORMAL NO. 233
STATE SUPERVISOR

P. E. & L. S.
L.C. # 8009
CHIEF

MONTVILLE TWP. TAX MAP
MORRIS COUNTY
SCALE 1" = 200'
APRIL 1959
AERO SERVICE CORPORATION
PHILADELPHIA, PA.

REV. 1983, 1988, 1972, 1975, 1976, 1982
Stephen A. Jaramock
Professional Planner & Land Surveyor
Montville, N.J. 07045

REVIEWED/REVISED: 1986, 1987, 1988, 1989, 1990, 1991, 1992, 1993, 1994, 1995, 1997, 2000, 2003, 2011, 2013, 2014
MARK J. MANTYLA
PROFESSIONAL LAND SURVEYOR, LIC#242903127200
MONTVILLE TOWNSHIP ENGINEERING DEPT.
MONTVILLE, N.J. 07045