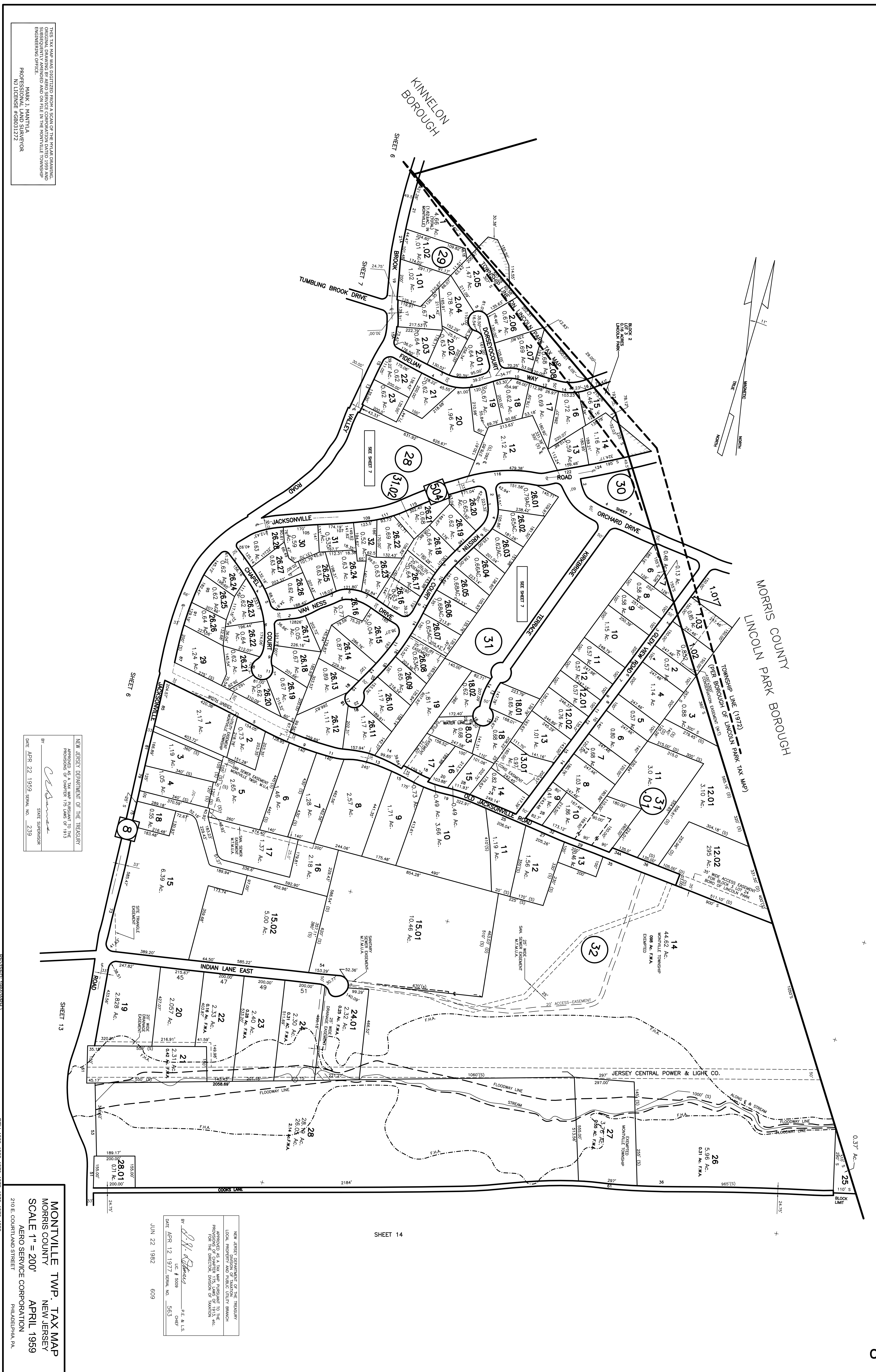


REVIEWED/REVISED: 1966, 1967, 1968, 1969, 1970, 1972, 1975, 1976, 1978, 1982
MARK J. MANTYLA
PROFESSIONAL LAND SURVEYOR #31272
MONTVILLE, N.J. 07095

THIS TAX MAP WAS DIGITIZED FROM A SCAN OF THE 1959 TAX MAP
ORIGINAL DRAWING BY AERO SERVICE CORPORATION DATED 1959 AND
SUBSEQUENTLY AMENDED AND ON FILE IN THE MONTVILLE TOWNSHIP
ENGINEERING OFFICE.
MARK J. MANTYLA
PROFESSIONAL LAND SURVEYOR
N.J. LICENSE #GR031272

REVISIONS (BY DATE)
LEONARD H. GREENFIELD & ASSOCIATES
Professional Land Surveyor & Planner
256 Myrtle Avenue
Bloomfield, N.J. 07005

REV: 1983, 1986, 1970, 1972, 1975, 1976, 1982
STEPHEN A. JARONICK
Licensed Professional Planner & Land Surveyor
Montville, N.J. 07095
MONTVILLE TWP. TAX MAP
MORRIS COUNTY NEW JERSEY
SCALE 1" = 200'
APRIL 1959
AERO SERVICE CORPORATION
210 E. COURTLAND STREET PHILADELPHIA, PA.



SHEET 14

NEW JERSEY DEPARTMENT OF THE TREASURY
LOCAL PROFESSIONAL ENGINEERING BRANCH
APPROVED AS A TAX MAP PURSUANT TO THE
PROVISIONS OF CHAPTER 175, LAWS OF 1959, ETC.
FOR THE DIRECTOR, DIVISION OF TAXATION
BY: *Stephen A. Jaronick* P.E. & L.S.
DATE APR 12 1977 SERIAL NO. 563
JUN 22 1982 609

NEW JERSEY DEPARTMENT OF THE TREASURY
APPROVED AS A TAX MAP PURSUANT TO THE
PROVISIONS OF CHAPTER 175, LAWS OF 1959,
Etc.
BY: *Mark J. Mantyla* STATE ENGINEER
DATE APR 22 1959 SERIAL NO. 239