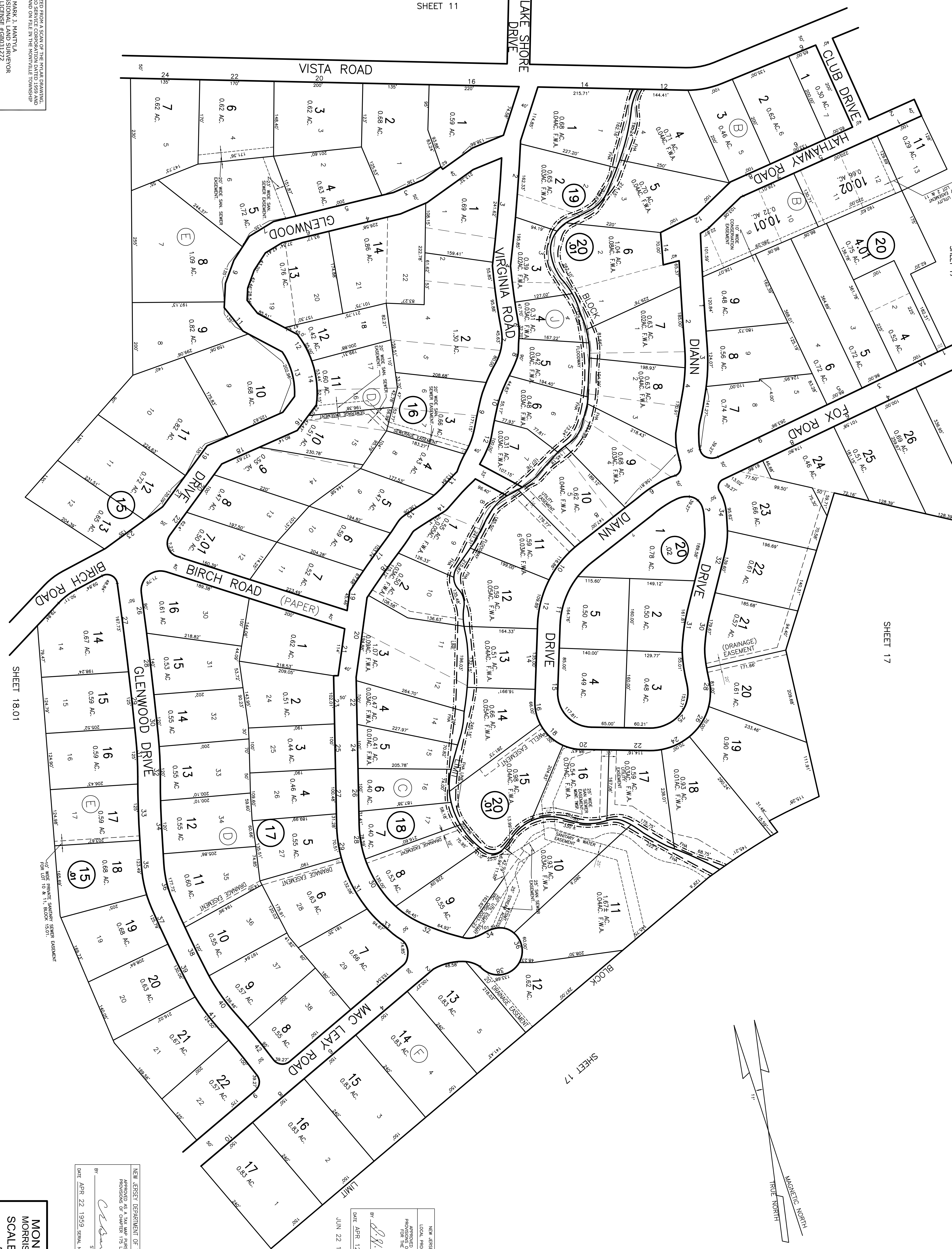


SHEET 11



NEW JERSEY DEPARTMENT OF THE TREASURY
 LOCAL REVENUE DIVISION OF TAXATION BRANCH
 APPROVED AS A TAX MAP PURSUANT TO THE
 PROVISIONS OF CHAPTER 175, LAWS OF 1912, ETC.
 FOR THE DIRECTOR, DIVISION OF TAXATION

DATE: APR 12 1977 SERIAL NO. 563
 JUN 22 1982 609

BY: *[Signature]* P.E. & L.S.
 U.C. # 5008
 CHIEF

NEW JERSEY DEPARTMENT OF THE TREASURY
 APPROVED AS A TAX MAP PURSUANT TO THE
 PROVISIONS OF CHAPTER 175, LAWS OF 1912

DATE: APR 22 1959 SERIAL NO. 239

BY: *[Signature]* STATE SUPERVISOR

MONTVILLE TWP., TAX MAP
 MORRIS COUNTY
 SCALE 1" = 100'
 APRIL 1959
 AERO SERVICE CORPORATION

210 E. COURTLAND STREET
 PHILADELPHIA, PA.

REVISIONS: 1984 (WBH)
 1. LEONARD H. GREENFIELD & ASSOCIATES
 Professional Land Surveyor & Planner
 236 Myrtle Avenue
 Montville, N.J. 07005

REV. 1963 1966 1968 1969 1970 1972 1973 1975 1976 1982
 Stephen A. Jamnick
 Licensed
 Professional Planner & Land Surveyor
 Montville, N.J. 07005

REVISIONS: 1986 1987 1988 1989 1991 1992 1993 1994 1995 1997 2000 2003 2004 2011 2014
 MARK J. MANTUA
 PROFESSIONAL LAND SURVEYOR #31,272
 MONTVILLE TOWNSHIP ENGINEERING DEPT.
 MONTVILLE, N.J. 07005

THIS TAX MAP WAS DIGITIZED FROM A SCAN OF THE ORIGINAL DRAWING.
 ORIGINAL DRAWING BY AERO SERVICE CORPORATION DATED 1959 AND
 SUBSEQUENTLY REVISIONED AND ON FILE IN THE MONTVILLE TOWNSHIP
 ENGINEERING DEPT.

MARK J. MANTUA
 PROFESSIONAL LAND SURVEYOR
 NJ LICENSE #GB031272