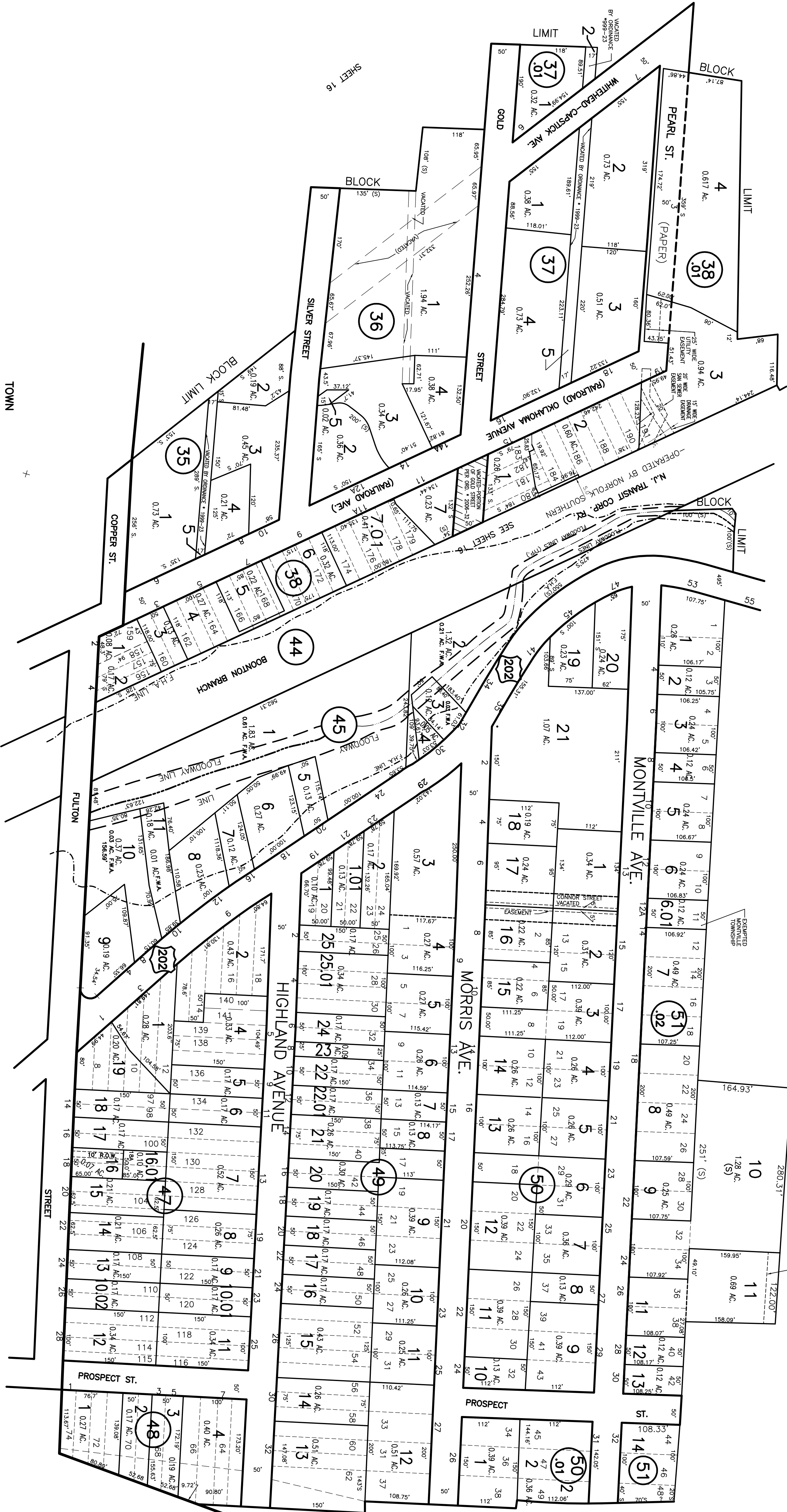


SHEET 16



N.J. STATE HIGHWAY ROUTE 287

SHEET 20

SHEET 20

20' WIDE DRAINAGE EASEMENT

THIS TAX MAP WAS DIGITIZED FROM A SCANS OF THE ORIGINAL SURVEY MAPS AND RECORDS. THE SURVEY MAPS AND RECORDS WERE CHECKED FOR ACCURACY AND CORRECTED WHERE NECESSARY. THE ORIGINAL SURVEY MAPS AND RECORDS ARE THE AUTHORITY FOR THIS TAX MAP.

MARK J. MANTUA
PROFESSIONAL LAND SURVEYOR
NJ LICENSE #2803172

MORRIS COUNTY

OF

BOONTON

NEW JERSEY DEPARTMENT OF THE TREASURY
APPROVED AS A TAX MAP PURSUANT TO THE PROVISIONS OF CHAPTER 175 LAWS OF 1913

DATE: APR 22 1959 SERIAL NO. 239

REVIEWED BY: Warren R. Harter
Professional Engineer
Montville Township Engineering Dept.
Montville, N.J. 07005

REVIEWED BY: Stephen A. Jaramet
Professional Engineer & Land Surveyor
Montville, N.J. 07005

NEW JERSEY DEPARTMENT OF THE TREASURY
LOCAL PROPERTY AND PUBLIC UTILITY BRANCH
APPROVED AS A TAX MAP PURSUANT TO THE PROVISIONS OF CHAPTER 175 LAWS OF 1913
FOR THE DIRECTOR, DIVISION OF TAXATION

DATE: APR 12 1977 SERIAL NO. 563

MONTVILLE TWP. TAX MAP
MORRIS COUNTY
SCALE 1" = 100'
APRIL 1959
AERO SERVICE CORPORATION
210 E. COURTLAND STREET
PHILADELPHIA, PA.

21

REVIEWED BY: 1986, 1987, 1988, 1989, 1990, 1991, 1992, 1993, 1994, 1995, 1997, 2000, 2003, 2004, 2007, 2011, 2014
PROFESSIONAL LAND SURVEYOR #31,272
MONTVILLE TOWNSHIP ENGINEERING DEPT.
MONTVILLE, N.J. 07045

21