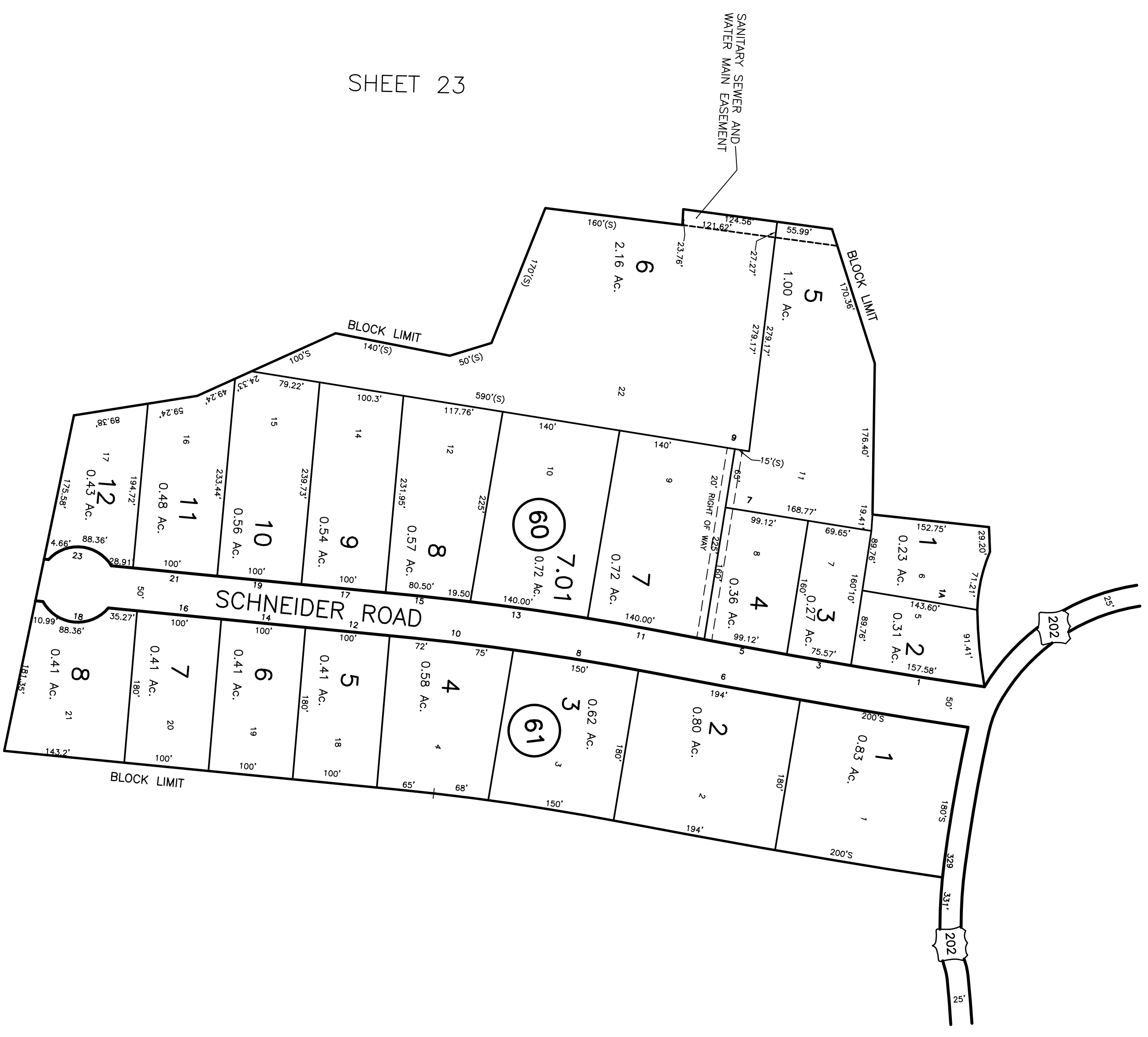


SHEET 23



SHEET 23

SHEET 23

THIS TAX MAP WAS DIGITIZED FROM A SCAN OF THE PLAT DRAWING.  
 ORIGINAL DRAWING BY AERO SERVICE CORPORATION DATED 1959 AND  
 ENGINEERING OFFICE.  
 MARK J. MAANTYA  
 PROFESSIONAL LAND SURVEYOR  
 NJ LICENSE #G9031272

NEW JERSEY DEPARTMENT OF THE TREASURY  
 APPROVED AS A TAX MAP PURSUANT TO THE  
 PROVISIONS OF STATUTE 17:27 OF 1959  
 BY *[Signature]* STATE SUPERVISOR  
 DATE APR 22 1959 SERIAL NO. 239

NEW JERSEY DEPARTMENT OF THE TREASURY  
 LOCAL PROPERTY AND PUBLIC UTILITIES BRANCH  
 APPROVED AS A TAX MAP PURSUANT TO THE  
 PROVISIONS OF STATUTE 17:27 OF 1959  
 FOR THE DIRECTOR, DIVISION OF TAXATION  
 BY *[Signature]* P.E. & L.S.  
 DATE APR 12 1977 SERIAL NO. 563  
 JUN 22 1982 609

MONTVILLE TWP. TAX MAP  
 MORRIS COUNTY NEW JERSEY  
 SCALE 1" = 100'  
 APRIL 1959  
 AERO SERVICE CORPORATION  
 210 E. COURTLAND STREET  
 PHILADELPHIA, PA.

REVIEWED/REVISED: 1986, 1987, 1988, 1989, 1990, 1991, 1992, 1993, 1994, 1995, 1997, 2011, 2014  
 MARK J. MAANTYA  
 PROFESSIONAL LAND SURVEYOR  
 MONTVILLE TOWNSHIP ENG. DEPT #MONTVILLE, N.J. 07045