

KEY MAP NORTH

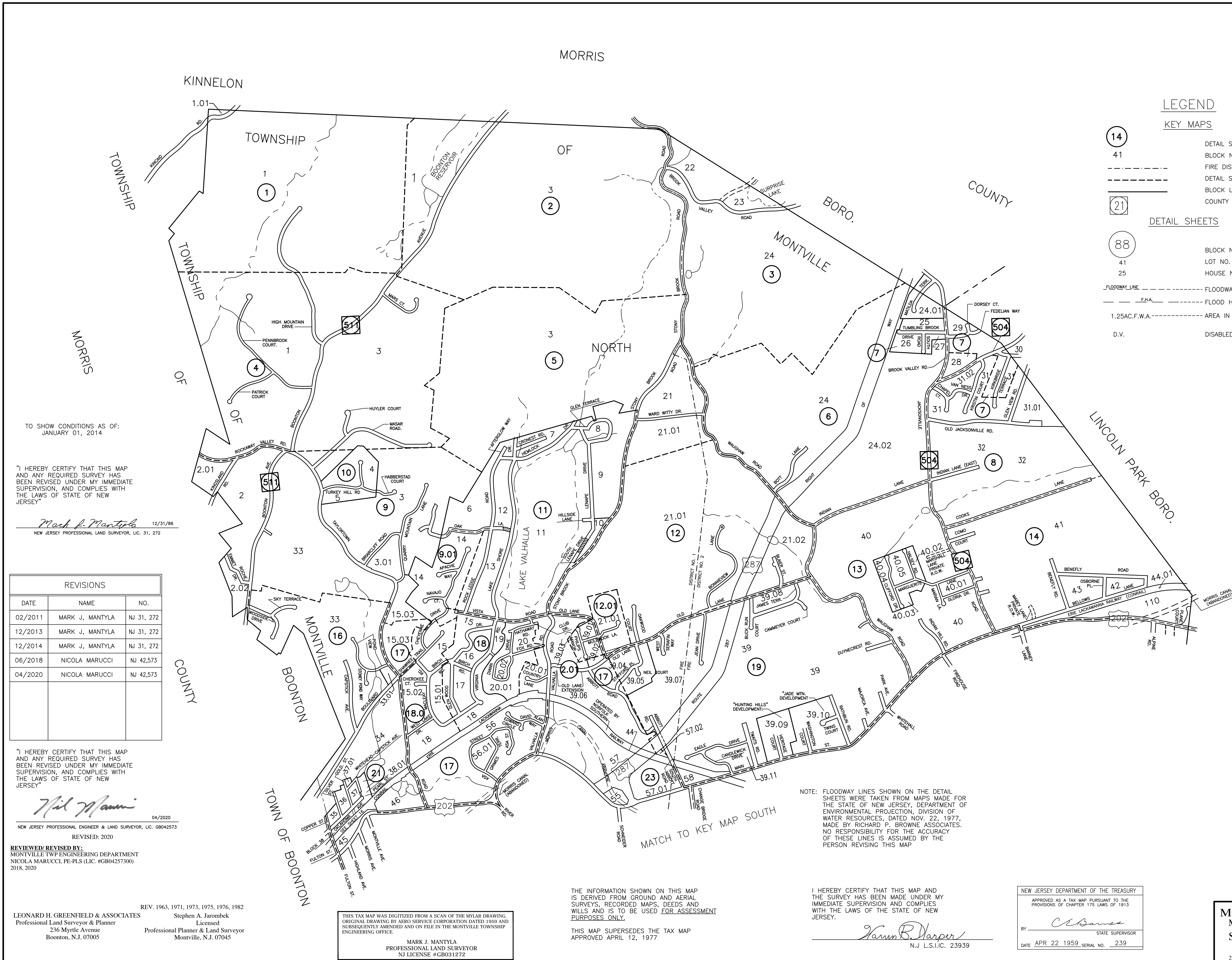
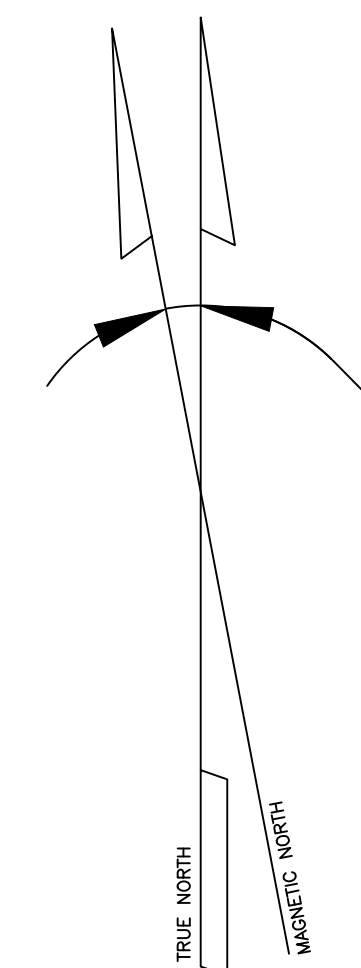
LEGEND

KEY MAPS

- 14 DETAIL SHEET NO.
- 41 BLOCK NO.
- FIRE DISTRICT
- DETAIL SHEET LIMIT
- BLOCK LIMIT
- COUNTY ROAD SYMBOL

DETAIL SHEETS

- 88 BLOCK NO.
- 41 LOT NO.
- 25 HOUSE NO.
- FLOODWAY LINE
- FLOOD HAZARD AREA LIMIT.
- 1.25AC.F.W.A. ----- AREA IN FLOODWAY
- D.V. ----- DISABLED VETERAN



TO SHOW CONDITIONS AS OF:
JANUARY 01, 2014

"I HEREBY CERTIFY THAT THIS MAP AND ANY REQUIRED SURVEY HAS BEEN REVISED UNDER MY IMMEDIATE SUPERVISION, AND COMPLIES WITH THE LAWS OF STATE OF NEW JERSEY"

Mark J. Mantyla 12/31/86
NEW JERSEY PROFESSIONAL LAND SURVEYOR, LIC. 31, 272

REVISIONS		
DATE	NAME	NO.
02/2011	MARK J. MANTYLA	NJ 31, 272
12/2013	MARK J. MANTYLA	NJ 31, 272
12/2014	MARK J. MANTYLA	NJ 31, 272
06/2018	NICOLA MARUCCI	NJ 42,573
04/2020	NICOLA MARUCCI	NJ 42,573

"I HEREBY CERTIFY THAT THIS MAP AND ANY REQUIRED SURVEY HAS BEEN REVISED UNDER MY IMMEDIATE SUPERVISION, AND COMPLIES WITH THE LAWS OF STATE OF NEW JERSEY"

Nicola Marucci 04/2020
NEW JERSEY PROFESSIONAL ENGINEER & LAND SURVEYOR, LIC. GB042573
REVISED: 2020

REVIEWED/REVISED BY:
MONTVILLE TWP ENGINEERING DEPARTMENT
NICOLA MARUCCI, PE-PLS (LIC. #GB04257300)
2018, 2020

REV. 1963, 1971, 1973, 1975, 1976, 1982
LEONARD H. GREENFIELD & ASSOCIATES
Professional Land Surveyor & Planner
236 Myrtle Avenue
Boonton, N.J. 07005

Stephen A. Jarombek
Licensed
Professional Planner & Land Surveyor
Montville, N.J. 07045

THIS TAX MAP WAS DIGITIZED FROM A SCAN OF THE MYLAR DRAWING: ORIGINAL DRAWING BY AERO SERVICE CORPORATION DATED 1959 AND SUBSEQUENTLY AMENDED AND ON FILE IN THE MONTVILLE TOWNSHIP ENGINEERING OFFICE.

MARK J. MANTYLA
PROFESSIONAL LAND SURVEYOR
NJ LICENSE #GB031272

THE INFORMATION SHOWN ON THIS MAP IS DERIVED FROM GROUND AND AERIAL SURVEYS, RECORDED MAPS, DEEDS AND WILLS AND IS TO BE USED FOR ASSESSMENT PURPOSES ONLY.

THIS MAP SUPERSEDES THE TAX MAP APPROVED APRIL 12, 1977

NOTE: FLOODWAY LINES SHOWN ON THE DETAIL SHEETS WERE TAKEN FROM MAPS MADE FOR THE STATE OF NEW JERSEY, DEPARTMENT OF ENVIRONMENTAL PROTECTION, DIVISION OF WATER RESOURCES, DATED NOV. 22, 1977, MADE BY RICHARD P. BROWNE ASSOCIATES. NO RESPONSIBILITY FOR THE ACCURACY OF THESE LINES IS ASSUMED BY THE PERSON REVISING THIS MAP

I HEREBY CERTIFY THAT THIS MAP AND THE SURVEY HAS BEEN MADE UNDER MY IMMEDIATE SUPERVISION AND COMPLIES WITH THE LAWS OF THE STATE OF NEW JERSEY.

Carroll B. Harper
N.J. L.S.I.C. 23939

NEW JERSEY DEPARTMENT OF THE TREASURY
APPROVED AS A TAX MAP PURSUANT TO THE PROVISIONS OF CHAPTER 175 LAWS OF 1913

Carroll B. Harper
STATE SUPERVISOR
DATE APR 22 1959 SERIAL NO. 239

NEW JERSEY DEPARTMENT OF THE TREASURY
DIVISION OF TAXATION
LOCAL PROPERTY AND PUBLIC UTILITY BRANCH

APPROVED AS A TAX MAP PURSUANT TO THE PROVISIONS OF CHAPTER 175, LAWS OF 1913, ETC. FOR THE DIRECTOR, DIVISION OF TAXATION

J. W. Thomas P.E. & L.S.
LIC. # 5009 SUPERINTENDENT
DATE JUN 22 1982 SERIAL NO. 609

NEW JERSEY DEPARTMENT OF THE TREASURY
DIVISION OF TAXATION
LOCAL PROPERTY AND PUBLIC UTILITY BRANCH

APPROVED AS A TAX MAP PURSUANT TO THE PROVISIONS OF CHAPTER 175, LAWS OF 1913, ETC. FOR THE DIRECTOR, DIVISION OF TAXATION

J. W. Thomas P.E. & L.S.
LIC. # 5009 SUPERINTENDENT
DATE APR 12 1977 SERIAL NO. 563

KEY MAP NORTH

MONTVILLE TWP. TAX MAP
MORRIS COUNTY NEW JERSEY
SCALE 1" = 1000' APRIL 1959
AERO SERVICE CORPORATION
210 E. COURTLAND STREET PHILADELPHIA, PA.