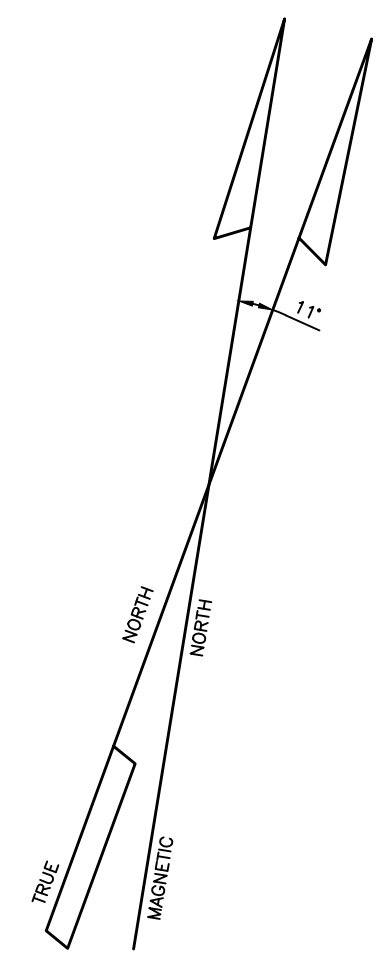
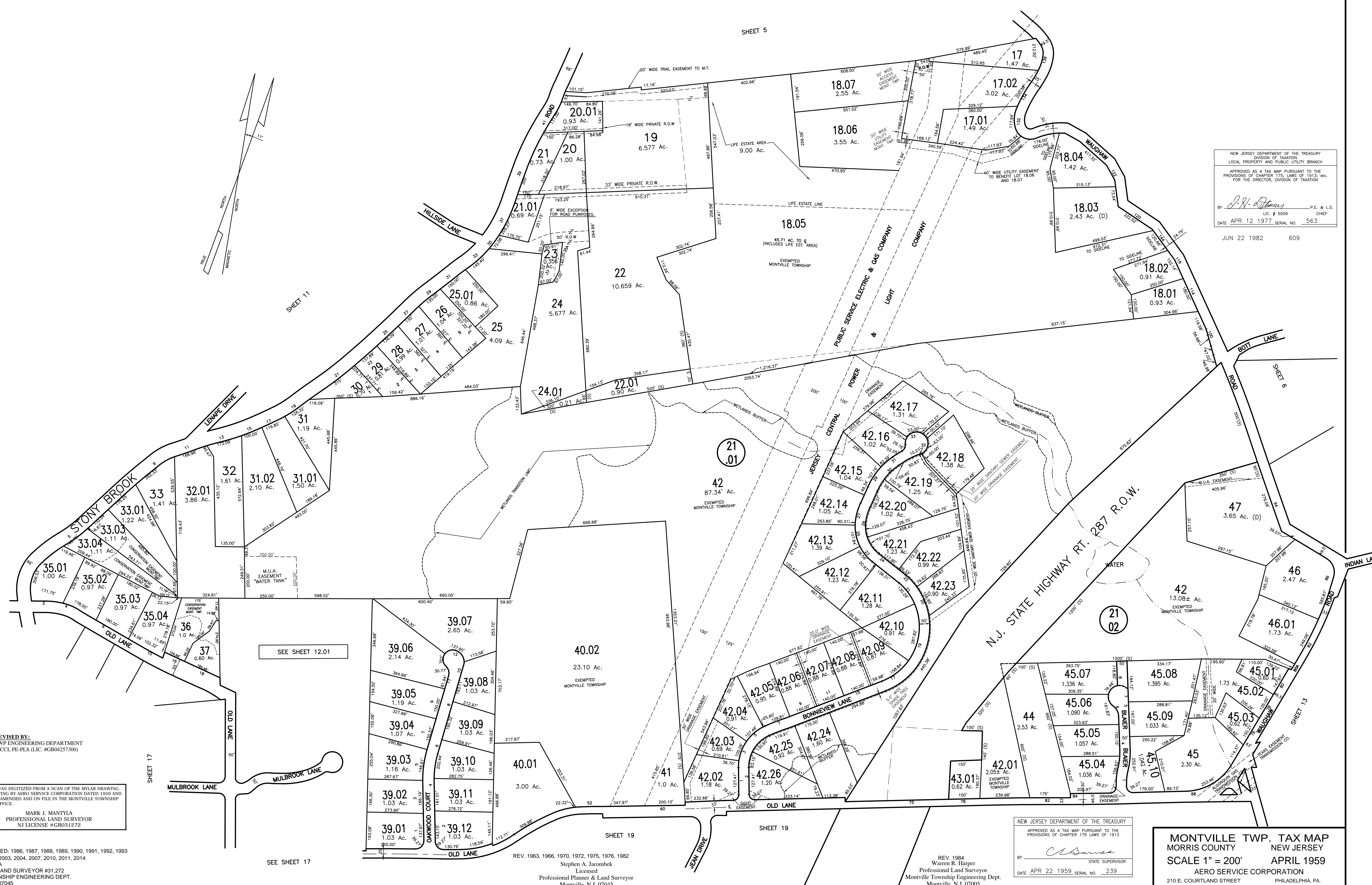


SHEET 5



NEW JERSEY DEPARTMENT OF THE TREASURY
 DIVISION OF TAXATION
 LOCAL PROPERTY AND PUBLIC UTILITY BRANCH
 APPROVED AS A TAX MAP PURSUANT TO THE
 PROVISIONS OF CHAPTER 175, LAWS OF 1913, ETC.
 FOR THE DIRECTOR, DIVISION OF TAXATION
 BY *J.W. Dimes* P.E. & L.S.
 LIC. # 5009 CHIEF
 DATE APR 12 1977 SERIAL NO. 563
 JUN 22 1982 609



REVIEWED/REVISED BY:
 MONTVILLE TWP ENGINEERING DEPARTMENT
 NICOLA MARUCCI, PE-PLS (LIC. #GB04257300)
 2018, 2020

THIS TAX MAP WAS DIGITIZED FROM A SCAN OF THE MYLAR DRAWING
 ORIGINAL DRAWING BY AERO SERVICE CORPORATION DATED 1959 AND
 SUBSEQUENTLY AMENDED AND ON FILE IN THE MONTVILLE TOWNSHIP
 ENGINEERING OFFICE.
 MARK J. MANTYLA
 PROFESSIONAL LAND SURVEYOR
 NJ LICENSE #GB031272

REVIEWED/REVISED: 1986, 1987, 1988, 1989, 1990, 1991, 1992, 1993
 1994, 1995, 1997, 2003, 2004, 2007, 2010, 2011, 2014
 MARK J. MANTYLA
 PROFESSIONAL LAND SURVEYOR #31,272
 MONTVILLE TOWNSHIP ENGINEERING DEPT.
 MONTVILLE, N.J. 07045

SEE SHEET 17

SEE SHEET 12.01

REV. 1963, 1966, 1970, 1972, 1975, 1976, 1982
 Stephen A. Jarombek
 Licensed
 Professional Planner & Land Surveyor
 Montville, N.J. 07045

REV. 1984
 Warren R. Harper
 Professional Land Surveyor
 Montville Township Engineering Dept.
 Montville, N.J. 07005

NEW JERSEY DEPARTMENT OF THE TREASURY
 APPROVED AS A TAX MAP PURSUANT TO THE
 PROVISIONS OF CHAPTER 175 LAWS OF 1913
 BY *C. Dimes* STATE SUPERVISOR
 DATE APR 22 1959 SERIAL NO. 239

MONTVILLE TWP. TAX MAP
 MORRIS COUNTY NEW JERSEY
 SCALE 1" = 200' APRIL 1959
 AERO SERVICE CORPORATION
 210 E. COURTLAND STREET PHILADELPHIA, PA.