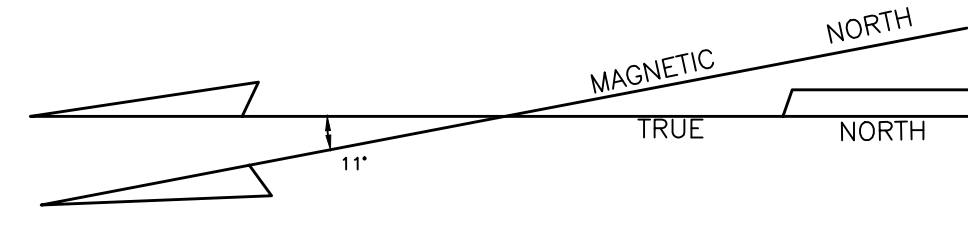
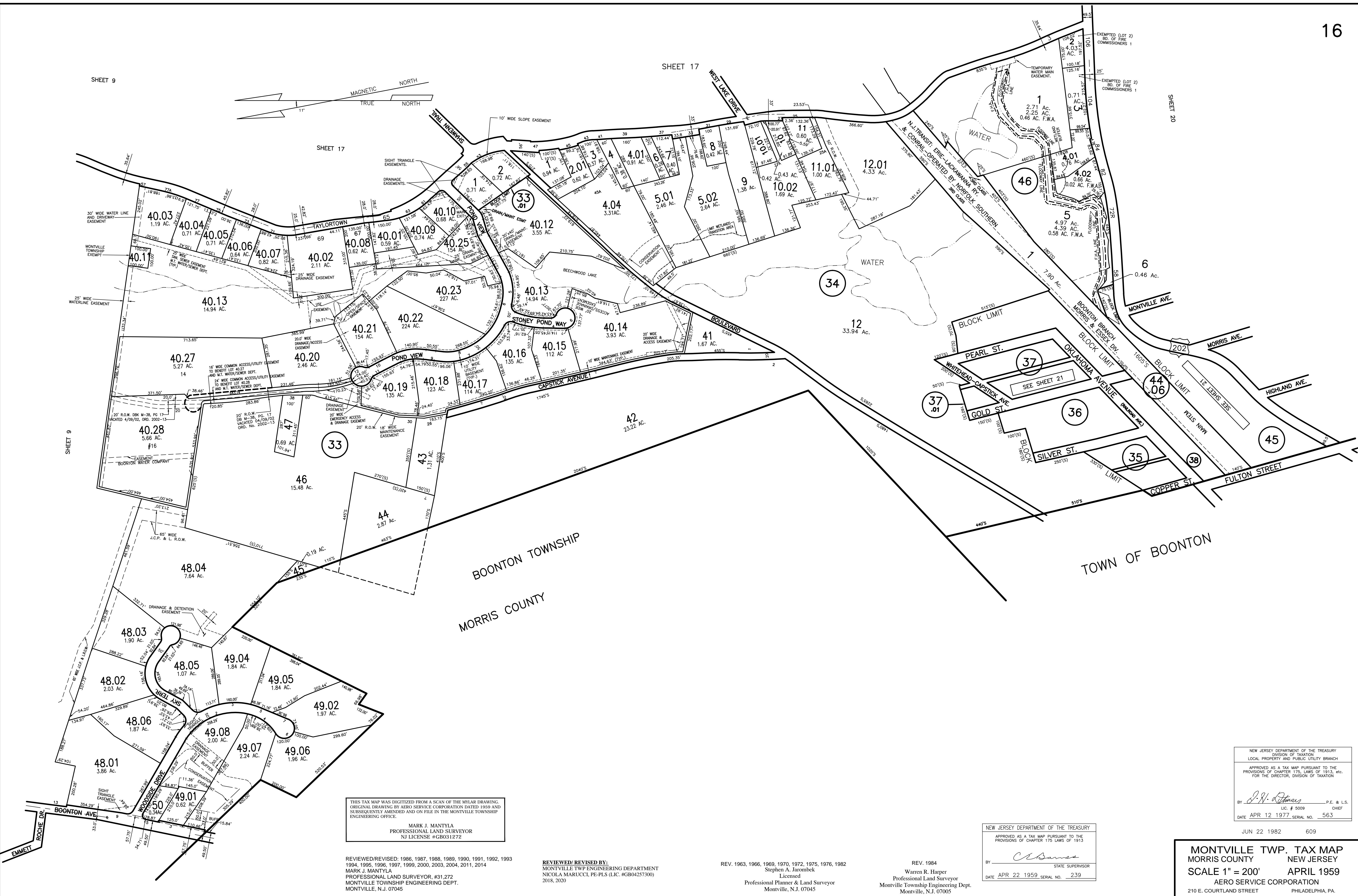


SHEET 9

SHEET 17

SHEET 20



THIS TAX MAP WAS DIGITIZED FROM A SCAN OF THE MYLAR DRAWING ORIGINAL DRAWING BY AERO SERVICE CORPORATION DATED 1959 AND SUBSEQUENTLY AMENDED AND ON FILE IN THE MONTVILLE TOWNSHIP ENGINEERING OFFICE.

MARK J. MANTYLA
PROFESSIONAL LAND SURVEYOR
NJ LICENSE #GB031272

REVIEWED/REVISED: 1986, 1987, 1988, 1989, 1990, 1991, 1992, 1993, 1994, 1995, 1996, 1997, 1999, 2000, 2003, 2004, 2011, 2014

MARK J. MANTYLA
PROFESSIONAL LAND SURVEYOR, #31,272
MONTVILLE TOWNSHIP ENGINEERING DEPT.
MONTVILLE, N.J. 07045

REVIEWED/REVISED BY:
MONTVILLE TWP ENGINEERING DEPARTMENT
NICOLA MARUCCI, PE-PLS (LIC. #GB04257300)
2018, 2020

REV. 1963, 1966, 1969, 1970, 1972, 1975, 1976, 1982

Stephen A. Jarombek
Licensed
Professional Planner & Land Surveyor
Montville, N.J. 07045

REV. 1984

Warren R. Harper
Professional Land Surveyor
Montville Township Engineering Dept.
Montville, N.J. 07005

NEW JERSEY DEPARTMENT OF THE TREASURY

APPROVED AS A TAX MAP PURSUANT TO THE PROVISIONS OF CHAPTER 175, LAWS OF 1913, ETC.

By: *C. E. Basso* STATE SUPERVISOR
DATE: APR 22 1959 SERIAL NO. 239

NEW JERSEY DEPARTMENT OF THE TREASURY
DIVISION OF TAXATION
LOCAL PROPERTY AND PUBLIC UTILITY BRANCH

APPROVED AS A TAX MAP PURSUANT TO THE PROVISIONS OF CHAPTER 175, LAWS OF 1913, ETC. FOR THE DIRECTOR, DIVISION OF TAXATION

By: *J. W. Thomas* P.E. & L.S.
LIC. # 5009 CHIEF
DATE: APR 12 1977 SERIAL NO. 563

JUN 22 1982 609

MONTVILLE TWP. TAX MAP
MORRIS COUNTY NEW JERSEY
SCALE 1" = 200' APRIL 1959
AERO SERVICE CORPORATION
210 E. COURTLAND STREET PHILADELPHIA, PA.