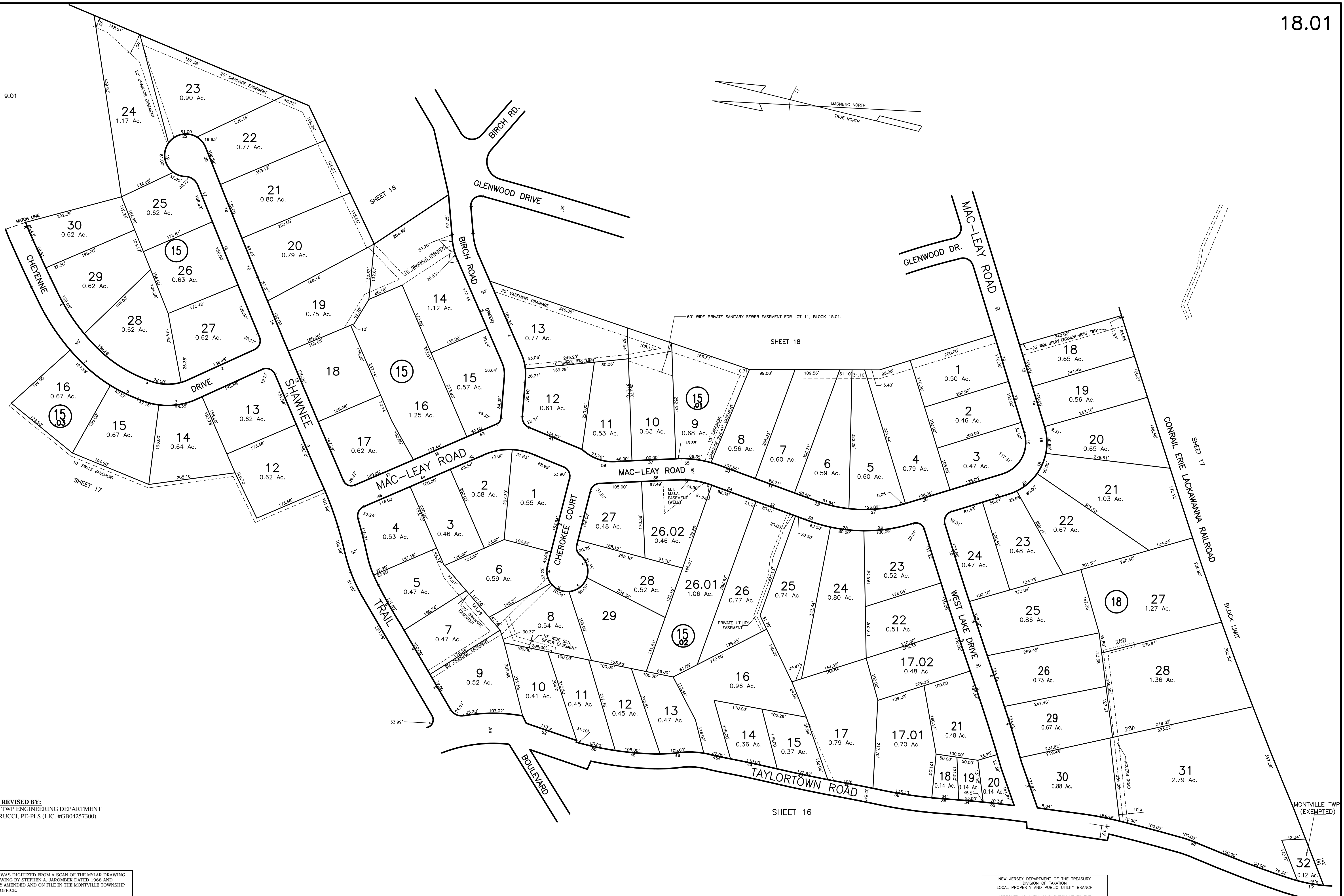
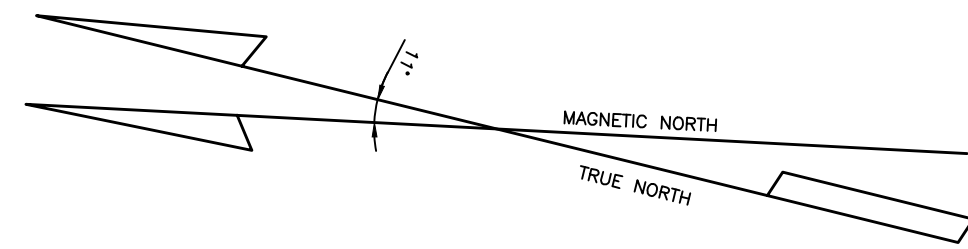


SHEET 9.01



REVIEWED/REVISED BY:  
MONTVILLE TWP ENGINEERING DEPARTMENT  
NICOLA MARUCCI, PE-PLS (L.I.C. #GB04257300)  
2018, 2020

THIS TAX MAP WAS DIGITIZED FROM A SCAN OF THE MYLAR DRAWING ORIGINAL DRAWING BY STEPHEN A. JAROMBCK DATED 1968 AND SUBSEQUENTLY AMENDED AND ON FILE IN THE MONTVILLE TOWNSHIP ENGINEERING OFFICE.  
MARK J. MANTYLA  
PROFESSIONAL LAND SURVEYOR  
NJ LICENSE #GB031272

REVIEWED/REVISED: 1986, 1987, 1988, 1989, 1990, 1991, 1992, 1993  
1994, 1997, 1999, 2003, 2004, 2011, 2014  
MARK J. MANTYLA  
PROFESSIONAL LAND SURVEYOR, #31,272  
MONTVILLE TOWNSHIP ENGINEERING DEPT.  
MONTVILLE, N.J. 07045

REV. 1963, 1972, 1975, 1976, 1982  
Stephen A. Jarombck  
Licensed  
Professional Planner & Land Surveyor  
Montville, N.J. 07045

REV. 1984  
Warren R. Harper  
Professional Land Surveyor  
Montville Township Engineering Dept.  
Montville, N.J. 07005

NEW JERSEY DEPARTMENT OF THE TREASURY  
DIVISION OF TAXATION  
LOCAL PROPERTY AND PUBLIC UTILITY BRANCH  
APPROVED AS A TAX MAP PURSUANT TO THE PROVISIONS OF CHAPTER 175, LAWS OF 1913, ETC. FOR THE DIRECTOR, DIVISION OF TAXATION.  
BY: *[Signature]* P.E. & L.S.  
LIC. # 5009 CHIEF  
DATE APR 12 1977 SERIAL NO. 563

MONTVILLE TWP. TAX MAP  
MORRIS COUNTY NEW JERSEY  
SCALE 1" = 100'  
DEC. 1968  
STEPHEN A. JAROMBCK  
LAND SURVEYOR  
MORRIS AVENUE MONTVILLE, N.J.