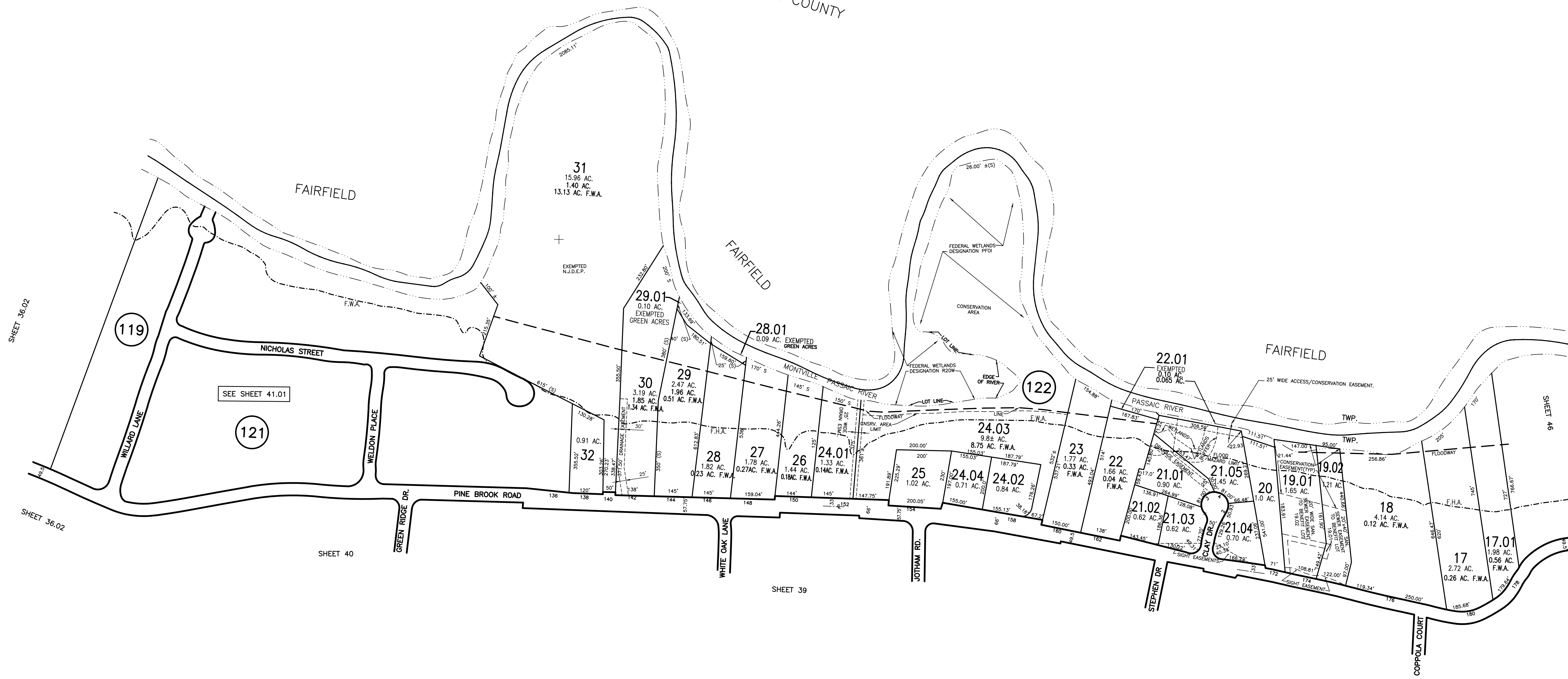


ESSEX COUNTY



REVIEWED/REVISED BY: MONTVILLE TWP ENGINEERING DEPARTMENT NICOLA MARUCCI, PE-PLS (LIC. #GB04257300) 2018, 2020

THIS TAX MAP WAS DIGITIZED FROM A SCAN OF THE MYLAR DRAWING, ORIGINAL DRAWING BY AERO SERVICE CORPORATION DATED 1959 AND SUBSEQUENTLY AMENDED AND ON FILE IN THE MONTVILLE TOWNSHIP ENGINEERING OFFICE.

MARK J. MANTYLA PROFESSIONAL LAND SURVEYOR NJ LICENSE #GB031272

REVIEWED/REVISED: 1966, 1987, 1988, 1989, 1990, 1991, 1992, 1993, 1994, 1995, 1996, 1997, 1998, 2003, 2005, 2011, 2014 MARK J. MANTYLA PROFESSIONAL LAND SURVEYOR, #31-272 MONTVILLE TOWNSHIP ENGINEERING DEPARTMENT, MONTVILLE, N.J. 07045

REV. 1963, 1970, 1972, 1975, 1976, 1982 Stephen A. Jarombek Licensed Professional Planner & Land Surveyor Montville, N.J. 07045

NEW JERSEY DEPARTMENT OF THE TREASURY APPROVED AS A TAX MAP PURSUANT TO THE PROVISIONS OF CHAPTER 175 LAWS OF 1913, BY [Signature] STATE SUPERVISOR DATE APR 22 1959 SERIAL NO. 239

NEW JERSEY DEPARTMENT OF THE TREASURY DIVISION OF TAXATION LOCAL PROPERTY AND PUBLIC UTILITY BRANCH APPROVED AS A TAX MAP PURSUANT TO THE PROVISIONS OF CHAPTER 175 LAWS OF 1913, ETC. FOR THE DIRECTOR, DIVISION OF TAXATION BY [Signature] P.E. & L.S. LIC. # 5009 CHIEF DATE APR 12 1977 SERIAL NO. 563

JUN 22 1982 609

MONTVILLE TWP. TAX MAP MORRIS COUNTY NEW JERSEY SCALE 1" = 200' APRIL 1959 AERO SERVICE CORPORATION 210 E. COURTLAND STREET PHILADELPHIA, PA.